

IT MATTERS.



EDITION SPOTLIGHT

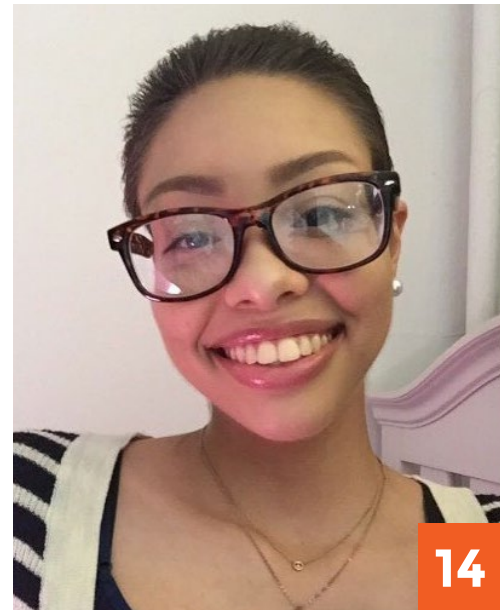
10 PATIENT STORY:
Priscilla's 20-Year Battle
with Stage IV Breast Cancer

14 PATIENT STORY:
Closing the Chapter on
Hodgkin's Lymphoma

22 HEROES BEYOND
THE OFFICE
Astera employees change
lives, beyond the office

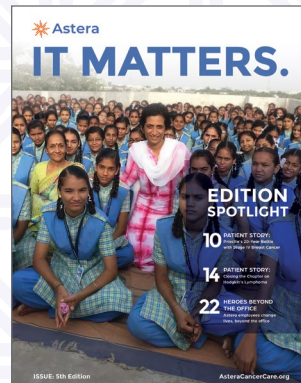
FIRST PAGE

Contents



Articles

- 3. Chairman and CEO Letter
- 4. Astera Cancer Care Strides for Hope: Supporting the American Cancer Society's Breast Cancer Walk
- 10. **Patient Story:** Priscilla's 20-Year Battle with Stage IV Breast Cancer
- 14. **Patient Story:** Closing the Chapter on Hodgkin's Lymphoma
- 16. Using an Electronic Capture Geriatric Assessment to Guide Rehabilitation Triage for Adults with Cancer During Systemic Therapy
- 18. Enhancing Precision Medicine Testing
- 20. The Impact of the Let's Save Ma Event
- 22. Heroes Beyond the Office
- 24. New Physicians Join the Astera Team!
- 28. Four New Locations Celebrated with Ribbon Cutting Ceremonies!
- 32. Astera Cancer Care Pioneering Breakthroughs in Cancer Research
- 33. QOPI (Quality Oncology Practice Initiative) Certification
- 34. Upcoming Virtual Programs



On the Cover
Let's Save Ma Event in India

Message From Our Chairman and CEO

Dear All,

I am excited to present the latest edition of It Matters. Within these pages, we share the most recent developments and achievements at Astera Cancer Care.

Our journey this year has been marked by remarkable achievements and unwavering dedication. We take great pride in announcing the enrollment of the inaugural group of patients globally in the expansion phase of both the Exelixis Jewel-101 Trial and the ASCENT-07 clinical study. In addition to presentations related to clinical trials, our team presented at the 2023 Annual American Society of Clinical Oncology Quality Symposium with two abstracts: Using an Electronic Capture Geriatric Assessment to Guide Rehabilitation Triage for Adults with Cancer During Systemic Therapy and Use of Oncology Patient Navigators (OPN) and a Molecular Processing Team (MPT) to Improve Germline Testing.

Our dedication to philanthropy shines through our active participation in events, such as Let's Save Ma and the American Cancer Society Walks. We are thankful for our patients, partners, and community who have made this possible.

I express my heartfelt appreciation to every member of the Astera family, our patients, their families, our partners, community members, and the entire staff for their compassion and collaborative care as we work towards our mission to transform cancer care and the management of blood disorders with patient-focused, research-based treatments.

Warm regards,

Edward J. Licitra, MD, PhD



Astera Cancer Care's Strides for Hope:

Supporting the American Cancer Society's Breast Cancer Walks

Astera Cancer Care's participation in two American Cancer Society (ACS) Making Strides Breast Cancer Walks this year underscores their dedication to the ACS's mission, which celebrates courage and hope. This mission unites communities to eradicate breast cancer and aligns with Astera's strong commitment to philanthropic community initiatives.

The Edison Walk, held on October 22, 2023, at Middlesex County College, was a significant event with a team of 225 members, comprising staff, patients, and friends. The event went beyond fundraising, featuring engaging activities such as a pumpkin painting session for kids. Moreover, Maggie Lytle, the Patient Navigator from the breast center, added a special touch by taking the stage with her band, The Midnight Vixens.

The Edison Walk team secured 1st place out of 223 teams in fundraising. Subsequently, the Jersey City Walk at Liberty State Park, despite dealing with inclement weather, drew 90 participants to register for its first year. A total of over 300 participants registered for both our walks, with Astera teams collectively raising almost \$24k!





ACS Breast Cancer Walk - Jersey City Team

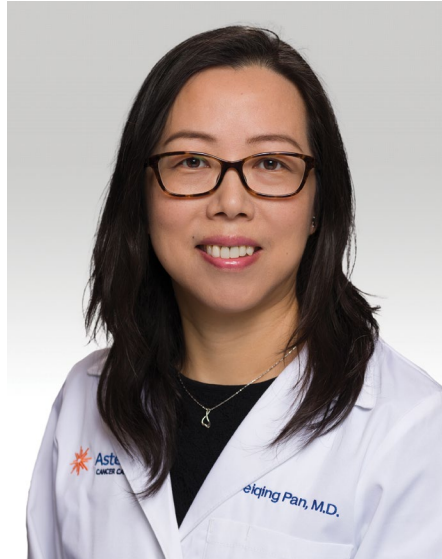


ACS Breast Cancer Walk - Edison Team

Priscilla's 20-Year Battle

with Stage IV Breast Cancer

In 2001, Priscilla was a 48 year old recovery room nurse at Somerset Medical Center when she started experiencing some pain in her left shoulder. A coworker who was an orthopedic surgeon suggested she get some imaging done because he thought she might have torn her rotator cuff—a common injury among nurses.



Beiqing Pan, MD

Priscilla went for an X-ray and quickly found out that she didn't have a torn rotator cuff. The results were worse than expected—she had a tumor in her left humerus, which is a bone in the upper arm. After extensive testing, her medical team determined the tumor had spread to her left humerus from her breast, diagnosing her with stage IV breast cancer.

Priscilla sought care at Astera Cancer Care under the expertise of Medical Oncologist-Hematologist Dr. Beiqing Pan. Dr. Pan offered comprehensive information about her treatment and delivered personalized care, guiding

her through every phase of the treatment process.

While stage IV breast cancer isn't curable, it can be treated. The lifespan of someone diagnosed with this form of cancer varies, but research shows that somewhere between 25 and 30 percent of people with stage IV breast cancer survive for five years or more. Common treatments include some combination of hormone therapy, immunotherapy, chemotherapy, and other targeted drugs.

For Priscilla, treatment started with radiation of

the humerus because the tumor affected nearly the whole bone. The outcome was extremely successful. "Six months later, you couldn't even tell I had cancer in the bone," she told us.

"Priscilla is a miracle patient," Dr Pan says. "To live more than 20 years with stage IV breast cancer is astounding."

Priscilla's cancer journey has been challenging, involving an intensive medication regimen. She received oral endocrine therapy, medications to strengthen her bones, and additional radiation in her lumbar spine. Despite the cost, Astera has played a crucial role in helping her secure financial support for these expensive medications.

Recently, Priscilla went for a liquid biopsy, which will help doctors try to identify mutations in her cancer by examining circulating tumor DNA. The results of the biopsy will guide her future treatment, letting her care team know if



Priscilla's 20-Year Battle

with Stage IV Breast Cancer

she's a good candidate for any targeted therapies. A targeted therapy is a highly precise treatment designed to attack specific kinds of cancer cells.

Throughout her journey with cancer and despite the complexity of her case, Priscilla has always felt as though her treatment and care couldn't have been better. She has always felt extremely supported by Dr. Pan and the rest of her medical team at Astera Cancer Care. "If you have any questions, they are always there to answer anything, and it was almost like they became family," she says.

In many ways, Priscilla's life has changed significantly since becoming sick. She used

to love visiting the beach, swimming, staying active, and spending time in nature. Now, at 70, she uses a walker following multiple back surgeries that are unrelated to her breast cancer diagnosis and treatment.

"Even though she is walking with a walker now, she is taking care of herself and always trying to be independent," Dr. Pan says. "I admire her spirit of fighting for life, courage, and resilience."

Even though her body sometimes reminds her otherwise, Priscilla still feels young in her mind. She spends a lot of time reading, crocheting, and taking walks outside. "I enjoy the outdoors greatly," she says. "The

sunshine—I always feel better when the sun is out."

Priscilla also works with breast cancer patients in her job as a nurse. Offering support and sharing her experiences with people going through something similar gives her a feeling of purpose and meaning in life.

She feels lucky to have a great network of friends and family who are always around to lift her up and lend a helping hand. Her niece calls her three times a week, and her friends drive her to medical appointments, offering endless support.

"We'll always take care of you," they tell her.

How common is breast cancer?

Breast cancer is the most common cancer in women in the United States, except for skin cancers. It is about 30% (or 1 in 3) of all new female cancers each year.

The American Cancer Society's estimates for breast cancer in the United States for 2023 are:

- About 297,790 new cases of invasive breast cancer will be diagnosed in women.
- About 55,720 new cases of ductal carcinoma in situ (DCIS) will be diagnosed.



Priscilla & Dr. Steven Young

Closing the Chapter on Hodgkin's Lymphoma

At 18 years old, Natalie had her whole life ahead of her— a newly entered college student with dreams of becoming a social worker—until her goals were put on hold.

On October 10, 2016, Natalie was diagnosed with Hodgkin's Lymphoma. After being hospitalized for frequent night sweats, high fevers, and unexplained weight loss, accompanied by a growth on her neck, Natalie underwent a biopsy procedure. The biopsy determined cancer.

"The end of one chapter is the start of another."

"Nothing went through my mind," she says when learning the shocking news. "I wasn't upset. I wasn't scared. I was just numb." She continues, "I didn't know how to feel, how to react, or what to expect, until I saw how it affected others. Then I felt my emotions."

Expecting her first appointment to be solemn, Natalie was pleasantly surprised when she met Astera Cancer Care's Medical Oncologist-Hematologist,

Dr. Amit Patel, at the Jersey City office. "Dr. Patel greeted me with welcomeness, understanding, and optimism," she says. "He did his best to make me feel at



Amit Patel, MD

home, which stood out to me. Dr. Patel and the entire staff ensured that I and my family felt comfortable. He educated and updated us throughout my care."

For the first few months, Natalie received IV chemotherapy. She underwent treatment every two weeks for seven months. While she didn't experience adverse side effects, Natalie did endure some hair loss. Halfway through her treatment, it began to grow back.

"Dr. Patel assured me I was going to be fine," she says. Following completion of chemotherapy, Natalie would have a PET scan every three months to check for any signs of cancer.

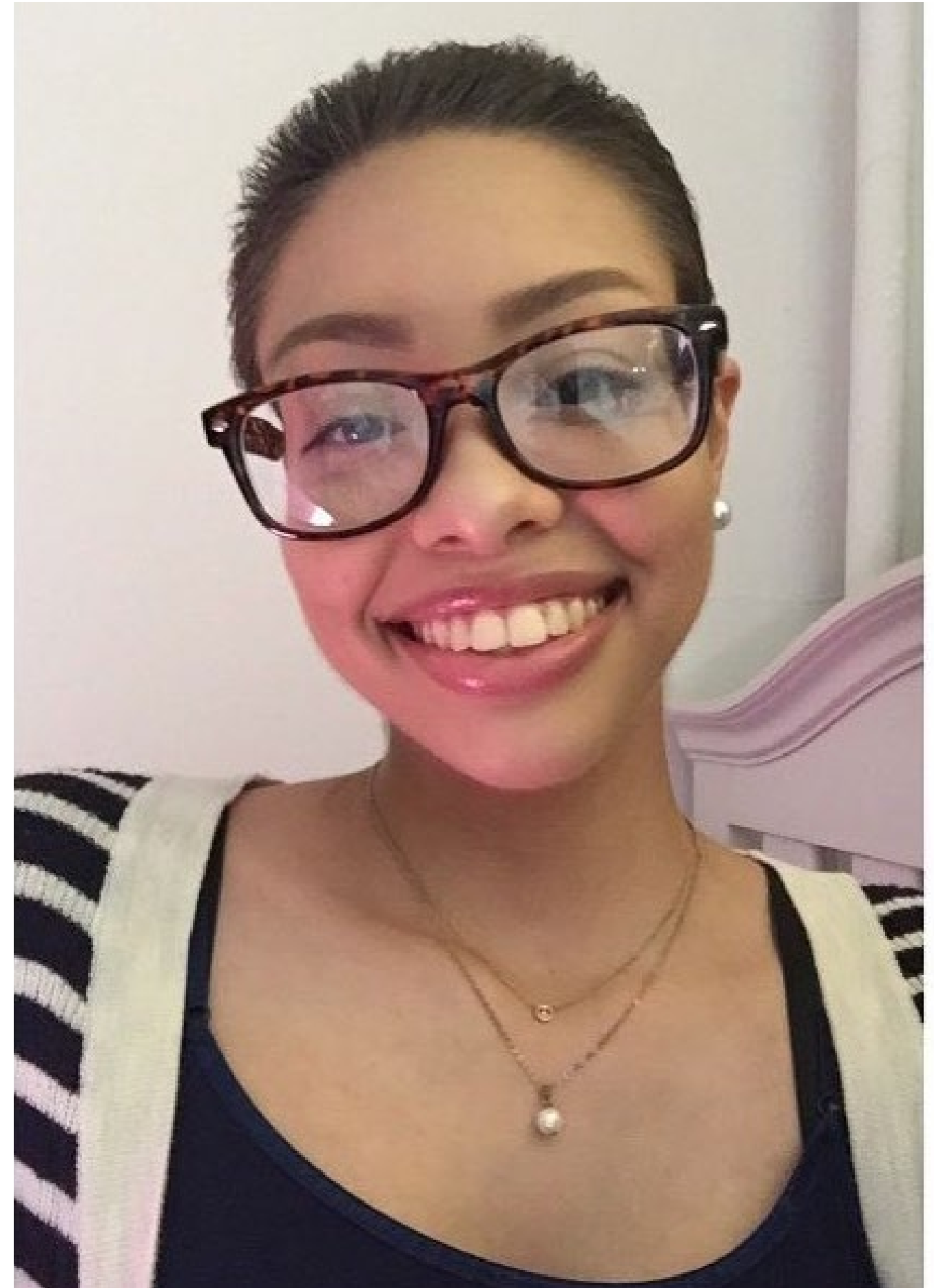
Natalie also had the support of her loved ones and grew closer to her family and friends.

Cancer-free since April 27, 2017, Natalie is now a graduate student working towards her Masters in Social Work. She interns at a charter school and works part-time at a childcare center.

"The end of one chapter is the start of another," she says.

Having cancer taught Natalie the importance of prioritizing health and giving herself grace. "We get so caught up in our daily routine, it's like we're rushing through life, we forget to enjoy the small things, the big things even," she says.

Not taking life too seriously has been her mantra. "I've learned how vulnerable we are as people and how our lives can change at any moment," she says. "Live in the moment; enjoy every second to the fullest."



Using an Electronic Capture Geriatric Assessment

to Guide Rehabilitation Triage for Adults with Cancer During Systemic Therapy

Based on research that took place at Astera Cancer Care, this abstract was authored by ReVital, with key support and co-authorship from Astera Cancer Care's Ellen Ronnen, MD, and Rachel Carroll, APRN, AOCNP.



Ellen Ronnen, MD

Among older adults who are receiving cancer care, frailty is often associated with poor treatment and survival outcomes, but this doesn't have to be the case if frailty is identified early and interventions are put in place, research shows. In fact, ASCO recommends using a geriatric assessment to identify frailty and guide care (including physical and occupational therapy) in a way that optimizes patient outcomes – but this practice is rare.

“During or after chemotherapy, 60-90% of individuals experience treatment-related side effects that can affect one's ability to do day-to-day activities and the

activities that matter most to them,” explains Tiffany Kendig, PT, DPT, MPH, CLT, who is Director of Quality at ReVital Cancer Rehabilitation. “Optimizing performance status and helping to address side effects early-on can be very effective – this is the essence of prehab.”

This research involved a pilot study of a geriatric assessment-based electronic frailty monitoring and a physical therapy/occupational therapy (PT/OT) triage system. The

study participants included adults with cancer who were starting a new line of systemic therapy at Astera Cancer Care. These adults participated in a monthly geriatric assessment for up to one year, with frailty identified in real time based on their responses to the assessment. Healthcare providers were told to place a referral for PT/OT if patients were identified as frail or pre-frail. Among participants who participated in rehabilitation, the researchers evaluated changes in health-related quality of life.

“Prehab provides us with another tool to prepare our patients for treatment, while empowering them to be more active and independent,” Carroll says. “We see an improvement in not only their ability to tolerate their treatments but their overall quality of life.”



Study results showed that an electronic capture frailty monitoring and PT/OT triage system that relied on a patient-reported geriatric assessment is feasible in a community oncology practice and may positively impact a patient's experience in systemic therapy and their health-related quality of life.

“They proved that you can do this and if you do it while patients are getting therapy, you can significantly improve metrics,” Dr. Ronnen says. “Patients reported better physical health, mental health, and physical function after being enrolled in this.”

The researchers recommend that community oncology practices that use geriatric assessments should



Rachel Carroll, APRN, AOCNP

incorporate PT/OT triage into routine care.

“The approach that Astera took is both proactive and innovative—it allows us to assess and understand frailty based on the patient's perception of how they're doing and proactively connect them with outpatient PT/OT services early on to help optimize function and quality of life as they

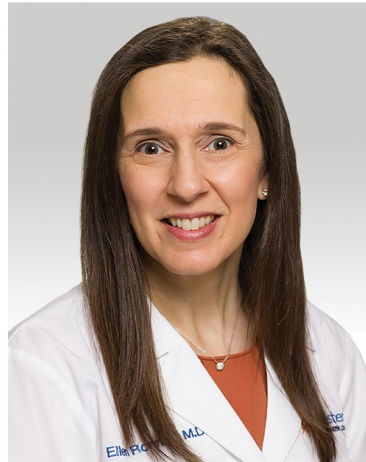
progress through cancer treatment,” Kendig says. Astera Cancer Care patients agreed that the focus on physical therapy and occupational therapy as prehab helped them tolerate cancer treatment side effects and maintain quality of life.

“Everything was always achievable and tailor-made to me so I can maintain that lifestyle that I had prior. And so that I'm still able to do things and be the person I was and actually am,” one patient said.

Another patient said the program helped them immensely. “They did a complete assessment of what I could do, and what I wanted to do,” they said. “And the goal was to maximize independence.”

Enhancing Precision Medicine Testing Process in a Breast Cancer Population of a Community Oncology Practice: Use of Oncology Patient Navigators (OPN) and a Molecular Processing Team (MPT) to Improve Germline Testing

by Astera Cancer Care's Ellen Ronnen, MD, and Melissa Cruz, LPN



Ellen Ronnen, MD

“This is a collaboration project that identifies the impact patient navigators have on the ordering process,” said Melissa Cruz. “Their ability to assist in identifying in real time any additional testing opportunities and using the molecular team to expedite the ordering process has been an effective way to reconcile testing and access to testing.”

Today, many cancer patients require genetic molecular testing to help inform their treatment options. Often a doctor will order a blood test and the care team will need to follow up on the testing over a period of a couple weeks – sometimes test results even go missing.

The results of this research revealed the benefits of using oncology patient navigators (OPNs) and a molecular processing team (MPT) to expedite the results of germline testing and increase its use. The research also found that it's essential to educate providers about the necessity of germline testing within patient populations who have breast cancer.

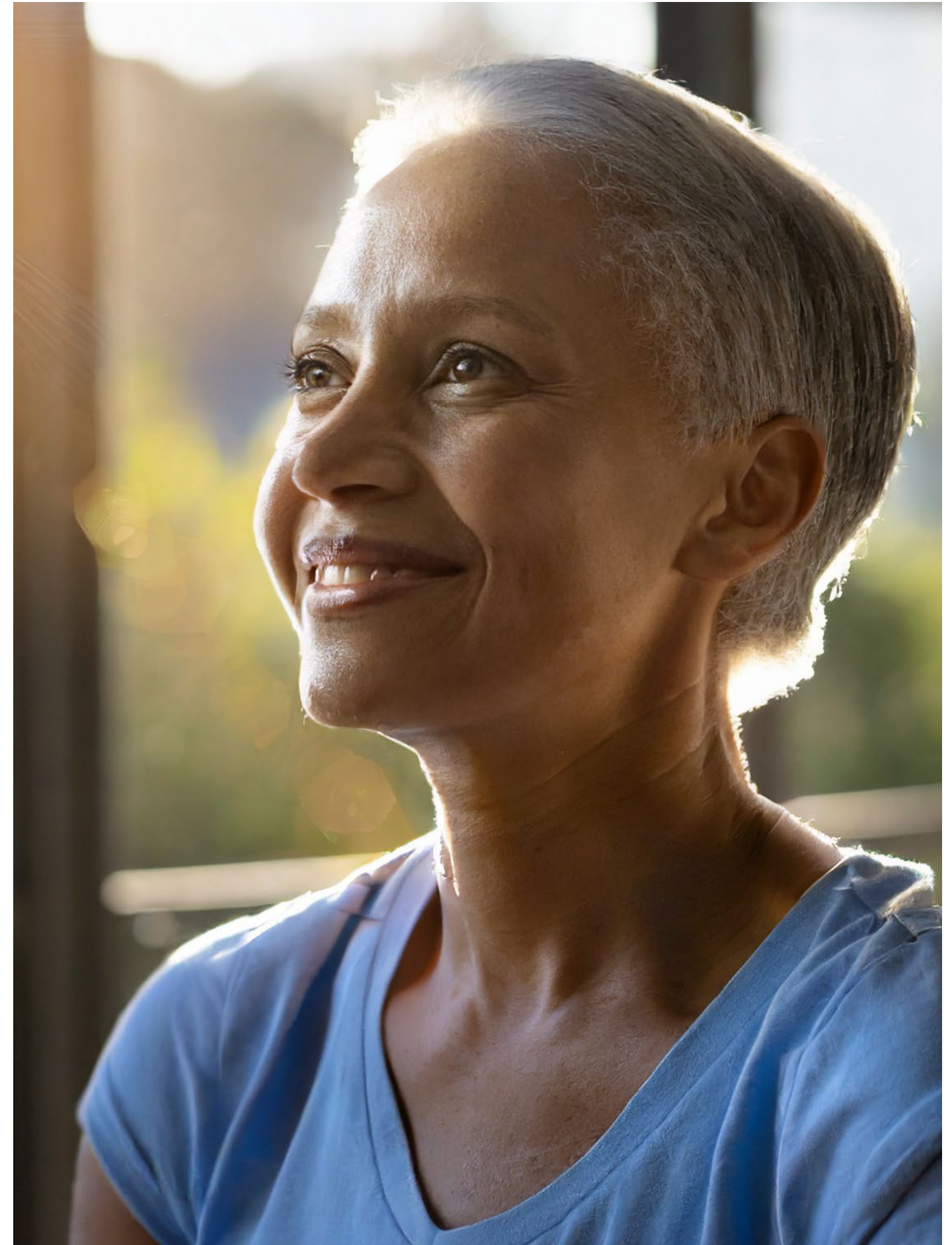
Germline testing uses blood tests to look for mutations in specific cancer-related genes inherited from a parent. This type of testing is important for informing treatment plans. “Germline testing allows genes to be identified from blood testing that you likely inherited from your parent and can predispose one to a cancer,” Dr. Ronnen explains.

In the past, many providers didn't understand how to optimize universal germline testing. Typically, germline testing was ordered using manual paper forms or through molecular vendor portal input without built-in follow-up capabilities, often resulting in delayed test results that could negatively impact a patient's treatment plan.

“The world of oncology has exploded in terms of doing a lot of different types of testing for circulating tumor cells and for molecular testing, both in the tumor and in the blood,” Dr. Ronnen says, explaining the importance of this research. “If we can find a way to be more organized about it, it's going to help patients in a lot of different ways.”



Melissa Cruz, LPN



The Impact of the Let's Save Ma Event on Breast Cancer Detection and Treatment in India

Breast cancer is a global health concern that affects women from all walks of life, transcending borders and cultures. Breast cancer is a formidable adversary in India and the United States, claiming lives and causing immense suffering. However, there is hope, compassion, and a shared commitment to making a difference amidst this challenge.



Let's Save Ma is a not-for-profit charitable organization committed to building a culture of health by advocating breast cancer awareness and providing access to mammograms for the most vulnerable, underserved populations in Jersey City. Early detection can save lives. Building a culture of health in Jersey City means a shared partnership between Let's Save Ma and the city to ensure all women (primarily reaching the South Asian, Black, or Hispanic community members) are

educated and have access to breast health.

This year, Astera Cancer Care sponsored Let's Save Ma, yielding funds for over 1,100 free mammograms to women residing in remote villages across India. These mammograms have proven life-changing for the women who received them, as they opened the door to early detection and timely intervention. This year, ten positive cases of breast cancer were discovered. These ten individuals,

previously unaware of their condition due to limited access to healthcare, are now on a path toward treatment and recovery.

Breast cancer is the leading cause of cancer-related deaths among women in India. The lack of awareness, limited access to healthcare facilities, and financial constraints are significant barriers to early detection and treatment. Let's Save Ma has taken a crucial step towards breaking down these barriers and empowering women with knowledge and access to healthcare resources.

Breast cancer, when diagnosed early, offers a significantly higher chance of survival. By providing these free mammograms and subsequently sponsoring surgeries and treatments, Let's Save Ma is changing the trajectory of these ten families. It's offering them hope, a chance at life, and

an opportunity to continue creating cherished memories with their loved ones.

Astera Cancer Care's Dr. Amit Patel is a key figure in this endeavor, serving on the Let's Save Ma board.



Dr. Patel believes being an oncologist is an important responsibility and a true privilege. Every patient he meets represents an opportunity to make a real difference and to turn a cancer patient into a survivor! Dr. Patel strives to provide the most attentive, effective, and advanced evidence-based care possible. He leads with

heartfelt empathy, guidance, and support for his patients and their families.



To learn more, visit www.letsavema.org

HEROES BEYOND THE OFFICE

In healthcare, heroes come in many forms, and their acts of valor often extend beyond the confines of the clinic. Such is the case with Astera Cancer Care's Physician Liaison Brian Smith, whose recent actions saved a life on a day that started like any other.

While on his way to the office, Brian found himself in the right place at the right time. As he merged onto the New Jersey Turnpike, Brian noticed a flurry of State Police vehicles racing ahead. Brian, who also has a background as a firefighter and EMT, always keeps his pager close by. When his pager buzzed with an alert about a motor vehicle accident, he maneuvered his vehicle onto the shoulder and approached the scene without hesitation.

After identifying himself as a first responder, Brian grabbed his medical bag and sprinted toward the police officers, ready to assist. Multiple cars were involved in the accident, but what caught Brian's attention was a tractor-trailer with a visibly distressed driver.

The situation was dire, with the truck driver in the passenger seat, a police officer attempting to stabilize him, and the driver's condition deteriorating rapidly. He wasted no time assessing the situation,



checking for a pulse, and realizing the situation's urgency. Brian recognized that the driver's condition was critical, as his breath sounds were labored and agonal. The driver's pulse was rapid and irregular, indicating he was on the verge of cardiac arrest.

Brian instructed someone to retrieve his AED (Automated External Defibrillator) from his medical bag and immediately initiated CPR. Within moments, the AED was powered on, and two shocks were delivered to the driver's heart. Brian successfully resuscitated the driver and ensured that he maintained a pulse until EMS professionals arrived on the scene.

The State Troopers at the scene quickly recognized Brian's heroism and noted the Astera Cancer Care logo on his scrubs. They contacted Astera's Robbinsville office, seeking to identify and extend their heartfelt gratitude to the man who had made such a difference. This led to an unexpected visit by representatives of the State Police, Robbinsville Police, Fire Department, and Capital Health Medics to Brian's home, where they honored him for his selfless and heroic act.

When asked about the incident, Brian's response was humble and heartwarming. "I don't do it for publicity," he stated. "I do it because that's what I was trained to do, and I'll always help someone if there is no EMS there yet."

Brian's remarkable story underscores the importance of having skilled and dedicated individuals like him in our communities. "I don't think people truly recognize the importance of seasoned paramedics and the extraordinary work they undertake each day. We handle critical situations on a regular basis."

As Brian continues to excel in his role at Astera Cancer Care, it's clear that his commitment to helping others extends far beyond the office walls. His actions inspire us all, reminding us that heroes can emerge when we least expect it, making the world a better place one courageous act at a time.

Astera Cancer Care

Welcomes Radiation Oncologist

Victor C. Ng, MD



Dr. Victor C. Ng practices at:

- 9 Centre Drive, Suite 115, Monroe Township, NJ 08831
- 1 Plainsboro Road, Plainsboro, NJ 08536

Dr. Ng developed an early interest in cancer biology while researching myeloid leukemia at UCSF after college, an interest that persisted after graduate school and into medical school. Once he began exploring radiation oncology, he felt immediate synergy with the specialty. Dr. Ng fell in love with the entire process of radiation therapy: the patient consultation, collaboration with other specialties, and design of patient-specific radiation plans based on a patient's anatomy and treatment goals.

Dr. Ng is looking forward to treating all sites of disease in both the definitive and palliative setting. During his time in residency, he developed a particularly strong interest in gastrointestinal, genitourinary, and head and neck cancers. More specifically, he became fascinated with strategies to tailor radiation dose and fractionation, treatment targets, and the use of radio-sensitizing systemic therapies to minimize toxicity and maximize response.

Dr. Ng received his Bachelor of Science from the University of California, Berkeley, his Master of Science in Biomedical Engineering from the University of Michigan, Ann Arbor, and his medical degree from the New York University School of Medicine. He then completed residency training at Memorial Sloan Kettering Cancer Center in New York. Dr. Ng has experience in all contemporary radiation therapy techniques, including IMRT, stereotactic radiosurgery, SBRT, and brachytherapy. He has published and presented research at numerous conferences, with a focus on precision oncology, specifically in the identification of patient-specific tumor predictors of response radiotherapy and susceptibility to radiosensitizing drugs. He is an active member of the American Society for Radiation Oncology.

Dr. Ng speaks fluent English and is conversational in Spanish and Cantonese.

Astera Cancer Care

Welcomes Radiation Oncologist

Nishant K. Shah, MD



Dr. Nishant K. Shah practices at:

- 2100 Wescott Dr, Flemington, NJ 08822
- 215 Easton Avenue, New Brunswick, NJ 08901

Dr. Shah's journey into medicine and radiation oncology began at a young age when his uncle, a primary care physician, inspired him. As he embarked on his medical education, he stumbled upon radiation oncology while seeking options for a family member diagnosed with prostate cancer. This sparked his fascination with the field, as it combined his passion for physics and engineering with a holistic, problem-based approach to cancer care. It allowed him to help patients during an understandably difficult time.

During his training, Dr. Shah completed a residency track in quality healthcare leadership, which focused on delivering high-quality care by creating a culture of safety and iterative quality improvement initiatives. With his background in engineering, Dr. Shah has always been interested in using innovative technology to improve patient care and outcomes and completed a fellowship with the Penn Center for Cancer Care Innovation.

Dr. Shah graduated magna cum laude in biomedical engineering at Boston University where he was a competitive dancer. He completed the prestigious combined engineering/medical integrated curriculum (ENGMEDIC). He graduated alpha omega alpha (AOA) at Boston University School of Medicine. He completed his internship in Internal Medicine and residency in Radiation Oncology at University of Pennsylvania where he was selected as the chief resident. During his time at University of Pennsylvania, he also completed a residency track in Healthcare Leadership in Quality and a fellowship at Penn Center for Cancer Care Innovation.

Dr. Shah speaks fluent English, Gujarati, and Hindi. His hobbies include hiking, traveling, podcasting, sports, and cooking.

Astera Cancer Care Welcomes Oncologist Aamer Farooq, MD



Board-certified hematologist-oncologist Aamer Farooq, MD, practices at:

- 629 Cranbury Rd, East Brunswick, NJ 08816
- 9 Centre Dr, Suite 100, Monroe Township, NJ 08831
- 1 Washington Blvd, Robbinsville, NJ 08691

Dr. Farooq has extensive experience treating all types of cancer but takes a special interest in lung and gastrointestinal cancers as well as hematologic malignancies. He has published his research in several peer-reviewed journals: The Annals of Thoracic Surgery, Journal of Thoracic Oncology and Journal of Clinical Oncology. Dr. Farooq was named Best Hematologist Oncologist by AY Magazine and won the prestigious Tsuguo Naruke Award for a research project at World Lung Cancer Conference. Dr Farooq is the Ex-President of APPNA Hematology and Oncology Chapter.

Prior to joining Astera, Dr. Farooq served as an attending physician with Florida Cancer Specialists. He completed his residency at the University of Tennessee Health Science Center in Memphis and a fellowship in Hematology-Oncology at Roswell Park Cancer Institute. Dr. Farooq is fluent in English, Urdu, Punjabi, Hindi, and Saraiki.

Astera Cancer Care Welcomes Breast Surgeon Darren Sachs, DO



Board-certified Breast Surgeon Darren Sachs, DO, will practice at 1 Exchange Place, Jersey City, NJ 07302.

Dr. Sachs specializes in breast surgery and general surgery. He strives to promote patient education and ensure his patients feel comfortable and understand their treatment options. Dr. Sachs was inspired by his family's medical background. He found joy in helping others and chose breast surgery due to a personal experience - his grandmother's battle with breast cancer. He's dedicated to preventing others from going through what she did.

Dr. Sachs received his Bachelor of Science from Emory University in Atlanta, Georgia. He then earned his Doctor of Osteopathic Medicine from the New York Institute of Technology College of Osteopathic Medicine in Old Westbury, New York. Afterward, he completed his residency in general surgery in Wyckoff Heights, Brooklyn, and an SSO-approved breast surgical oncology fellowship at Fox Chase Cancer Center, in Philadelphia, Pennsylvania.

NEW LOCATION RIBBON CUTTING CEREMONIES

Astera marked several milestones with ribbon-cutting ceremonies for new offices:

East Brunswick Office June 27, 2023:

629 Cranbury Road, 2nd floor,
East Brunswick, NJ 08816

A ribbon-cutting ceremony celebrated the opening, with community members in attendance.



SCAN CODE
TO WATCH VIDEO

WATCH NOW

Jersey City Office August 24, 2023:

1 Exchange Place
Jersey City, NJ 07302

The grand opening ceremony featured esteemed guests, including Mayor Steven Fulop and community physicians.



SCAN CODE
TO WATCH VIDEO

WATCH NOW



East Brunswick Team

NEW LOCATION

RIBBON CUTTING

CEREMONIES

Robbinsville Office

October 26, 2023:

1 Washington Blvd, Suite 9
Robbinsville, NJ 08691



SCAN CODE
TO WATCH VIDEO

WATCH NOW

Edison Office

November 2, 2023:

3 Progress Street, Suite 100
Edison, NJ 08820



SCAN CODE
TO WATCH VIDEO

WATCH NOW



Edison Ribbon Cutting!



Robbinsville Ribbon Cutting!



Jersey City Ribbon Cutting!

Astera Cancer Care: Pioneering Breakthroughs in Cancer Research

Astera Cancer Care was proudly the first site globally to enroll patients in three pivotal clinical studies, Astera reflects its commitment to advancing cancer treatments and pioneering advancements in the field. The practice remains dedicated to empowering patients with advanced therapies and contributing significantly to the progress of cancer research.

Exelixis JEWEL-101 Clinical Study

This open-label, multicenter, phase 1 study investigates Exelixis' next-generation antibody-drug conjugate, XB002, in patients with advanced solid tumors. JEWEL-101 is actively enrolling patients with advanced solid tumors, particularly those for whom conventional therapies are unavailable, ineffective, or intolerable. The most prevalent types of cancer among enrolled patients include pancreatic, colorectal, cervical, and prostate cancer. For those interested in participating in these clinical trials, eligibility requirements can be reviewed on clinicaltrials.gov (NCT04925284).

ASCENT-07 Clinical Trial

The ASCENT-07 clinical study is a Phase 3 trial comparing sacituzumab govitecan with treatment of physician's choice in patients with HR+/HER2-metastatic breast cancer who have previously received endocrine therapy. Individuals interested in participating in these clinical trials can review eligibility requirements on clinicaltrials.gov (NCT05840211).

TROPION-Lung01 Clinical Trial

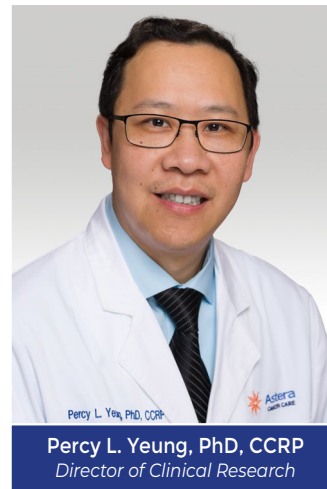
This Tropion-Lung01 clinical study is a positive trial for extending progression-free survival for lung cancer patients. As the first site globally to open and enroll a patient, Astera presented at the European Society for Medical Oncology and was recognized with a Presidential Symposium presentation. This accomplishment, initiated in late 2020 and completed last year, underscores Astera's commitment to advancing medical research and improving outcomes for lung cancer patients.

Clinical trials are of paramount importance in advancing medical knowledge and treatment options. They provide an avenue for patients to access cutting-edge investigational therapies and contribute to the collective effort to advance cancer research. Astera Cancer Care remains dedicated to pioneering advancements in cancer research and providing hope to individuals facing challenging diagnoses.

To schedule an appointment at Astera Cancer Care and explore these innovative treatments, please call (732) 390-7750.



Bruno S. Fang, MD
President & Head of Clinical
Research Team



Percy L. Yeung, PhD, CCRP
Director of Clinical Research



Scan the QR Code
to View Our Clinical Trials

Mrs. Puddingface Chronicles

Artwork by patient Barbara P.

Who doesn't like pudding?



Mrs. Puddingface does her best thinking when she takes a long shower and lets her mind wander.

Who doesn't like pudding?



Mrs. Puddingface is feeling tired and sad because she never imagined a world like we have today.

ASCO QOPI[®] Certification Program

Astera Cancer Care has earned the prestigious QOPI (Quality Oncology Practice Initiative) Certification, a true testament to our commitment to exceptional patient care!

Achieving QOPI Certification is no small feat; it requires unwavering dedication, teamwork, and adherence to rigorous quality standards. We have remained QOPI certified for ten years now, thanks to our collective efforts that have paved the way for this remarkable accomplishment.

Our successful certification journey reflects the countless hours of meticulous work, from refining treatment protocols to enhancing patient communication and streamlining operations. This achievement is a direct result of our staff's expertise and dedication.

We remain committed to pursuing excellence in every facet of our practice, consistently elevating the standards of cancer care to create a meaningful impact on the lives of our patients.

Upcoming Virtual Programs

1/22/24 : Medicare 101: Introduction to Medicare & Changes for 2024



Facilitated by: **Deborah Bonfante**

Learn about Medicare, how to get the most out of your coverage, and changes for the new year.

1:00pm

2/8/24: Cancer Recovery Fitness Class (Beginner)



Facilitated by: **Debi Price, Certified Personal Trainer & Cancer Exercise Specialist, JCC of Central New Jersey**

Recover from cancer treatment with hands-on training by a certified expert and learn exercises designed to help heal and improve physical and emotional quality of life.

12:00pm-1:00pm

2/12/24: Transportation Options



Facilitated by: **Sharlynn Flores, LCSW**

Don't let transportation be your barrier in getting the care you need. Find out about different transportation resources in your community.

1:00pm

3/11/24: Social Work 101: Meet & Greet



Facilitated by: **Neshama Marcus, LCSW, OSW-C, Director of Social Work**
Sharlynn Flores, LCSW

Learn about the wonderful services our Social Work team offers and how it can benefit you during your journey.

1:00pm

4/8/24 : Advance Care Planning



Facilitated by: **Tina Basenese, MA, APN, ACHPN, Director of Palliative Medicine & Supportive Care**

Learn all about Advance Care Planning and why it's so important.

1:00pm

5/13/24: Paid Caregiving in NJ



Facilitated by: **Neshama Marcus, LCSW, OSW-C, Director of Social Work**

If you are providing care to a family member diagnosed with cancer or chronic illness, you may be able to get paid.

1:00pm

6/10/24: Exploring Government Housing Opportunities



Facilitated by: **Sharon Zarate, LCSW**

Questions like, what are the eligibility criteria for Section 8 and so many more can be answered during this seminar.

1:00pm



Neshama Marcus, LCSW, OSW-C



To register for upcoming virtual programs, scan QR Code or visit: asteracancercare.org

Locations

Medical Oncology

Bridgewater

P: 732-390-7750

1200 US Highway 22 East - 3rd Floor, Bridgewater, NJ 08807

East Brunswick

P: 732-390-7750

629 Cranbury Road - 2nd Floor, East Brunswick, NJ 08816

Edison

P: 732-390-7750

3 Progress Street - Suite 100, Edison, NJ 08820

Jersey City

P: 732-390-7750

1 Exchange Place, Jersey City, NJ 07302

Monroe Township

P: 732-390-7750

9 Centre Drive - Suite 100, Monroe Township, NJ 08831

Robbinsville

P: 732-390-7750

1 Washington Boulevard - Suite 9, Robbinsville, NJ 08691

Rutherford

P: 732-390-7750

201 RT 17 North - FL 11, Rutherford, NJ 07070

Somerset

P: 732-390-7750

75 Veronica Avenue - Suite 201, Somerset, NJ 08873



Sameer P. Desai, MD and Maqsood Amjad, MD

Locations Radiation Oncology

Darby

P: 610-237-4370

Mercy Fitzgerald Hospital Department of Radiation Oncology

1500 Lansdowne Avenue - Medical Science Building, Lower Level - Darby, PA 19023

Flemington

P: 908-788-6514

Hunterdon Regional Cancer Center Department of Radiation Oncology

2100 Wescott Drive, Flemington, NJ 08822

Freehold

P: 609-655-5755

CentraState Medical Center Department of Radiation Oncology

901 West Main Street, Freehold, NJ 07728

Langhorne

P: 215-710-5300

St. Mary Regional Cancer Center Department of Radiation Oncology

1201 Langhorne-Newtown Road, Langhorne, PA 19047

Monroe Township

P: 609-655-5755

9 Centre Drive - Suite 115, Monroe Township, NJ 08831

New Brunswick - Saint Peter's University Hospital

P: 609-655-5755

215 Easton Avenue, New Brunswick, NJ 08901

Plainsboro

P: 609-853-6770

Penn Medicine Princeton Medical Center Department of Radiation Oncology

One Plainsboro Road, Plainsboro, NJ 08536

Somerset

P: 732-357-2600

ProCure Proton Therapy Center

103 Cedar Grove Lane, Somerset, NJ 08873

Locations Breast Surgery

Monroe Township

P: 732-390-7750

9 Centre Drive, Suite 100, Monroe Township, NJ 08831

New Brunswick - The Breast Center Saint Peter's University Hospital

P: 732-846-3300

CARES Building 240 Easton Avenue, 3rd Floor

New Brunswick, NJ 08901

Jersey City

P: 732-390-7750

1 Exchange Place, Jersey City, NJ 07302



Lisa Hopkins, MD



Lisa Hopkins, MD and Sundus Abbasi, DO



OUR PATIENTS & THEIR FAMILIES MATTER

Our patients and their families tell the story of overcoming cancer like no other. They help us connect, inspire, and empower. If you know a patient or have a family member who would like to make an impact and share their experience with us, please have them contact dorothy.ballweg@asterahealthcare.org.

